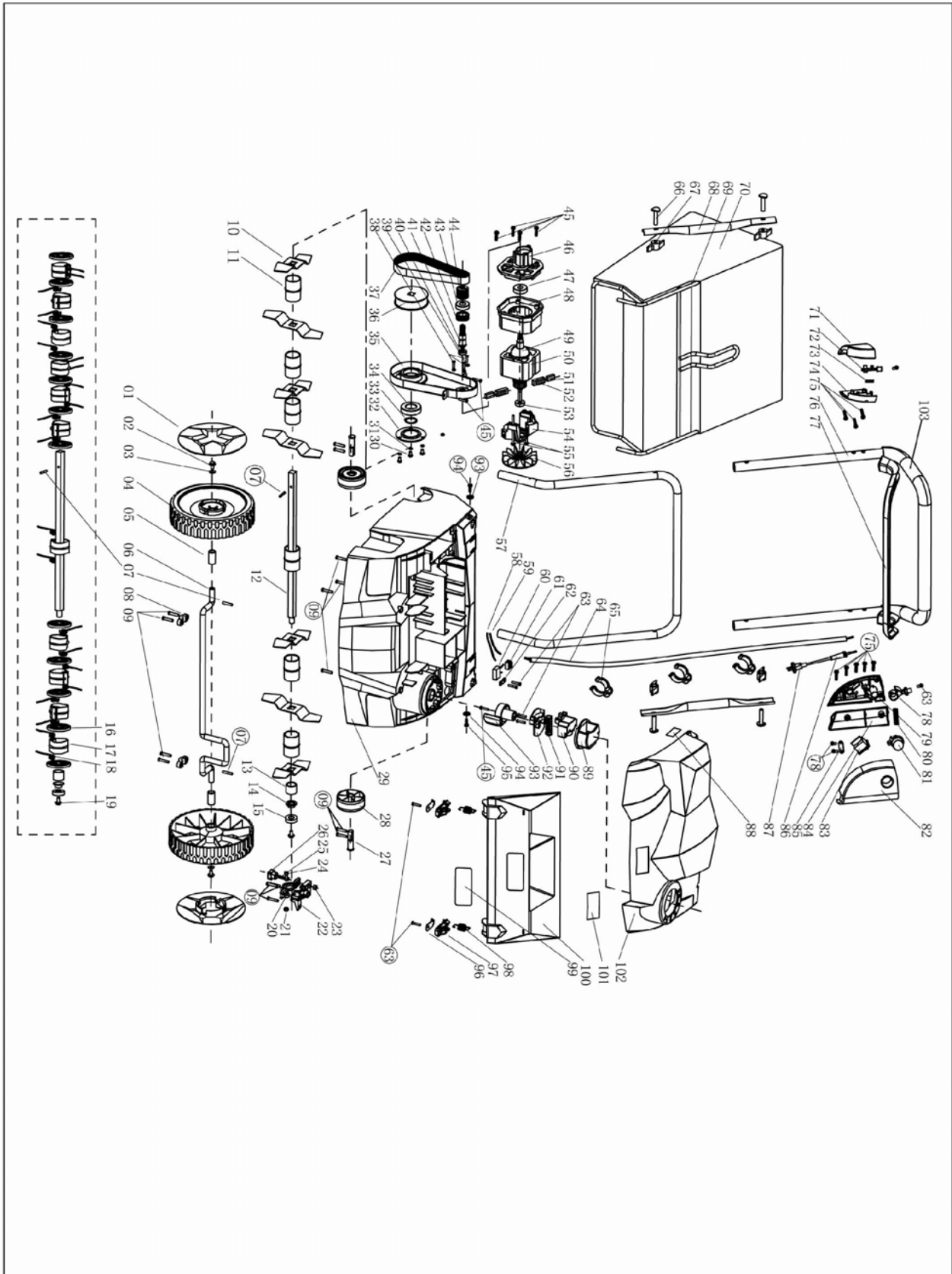




**Riwall** PRO

**REV 3816**



<b>Spare parts list for REV 3816 B</b>				
<b>Pos no</b>	<b>Riwall no</b>	<b>Refence</b>	<b>Description</b>	<b>QTY</b>
1	REV3816R-1	6641-0001-1	Front wheel cover	2
2	REV1638R-2	6641-0002	Bolt M6*12	4
3	REV1638R-3	6641-0003	Washer Ø20*Ø8*1	2
4	REV1638R-4	6641-0004	Front wheel	2
5	REV1638R-5	6641-0005	Front wheel bush	2
6	REV1638R-6	6641-0006	Front wheel axel	1
7	REV1638R-7	6641-0007	Split backing pin	4
8	REV1638R-8	6641-0008	Front wheel clamp plate	2
9	REV1638R-9	6641-0009	Screw ST5*25	20
10	REV1638R-10	6641-0010	Blade	7
11	REV1638R-11	6641-0011	Blade shaft tube	6
12	REV1638R-12	6641-0012	Blade shaft	2
13	REV1638R-13	6641-0013	Axel head bush	2
14	REV1638R-14	6641-0014	Axel head bushing pipe	2
15	REV1638R-15	6641-0015	Bearing 6001ZZ	2
16	REV1638R-16	6641-0016	Cutter shaft board	12
17	REV1638R-17	6641-0017	Cutter shaft holder	11
18	REV1638R-18	6641-0018	Spring needle	22
19	REV1638R-19	6641-0019	Bolt	2
20	REV1638R-20	6641-0020	Bearing gland	1
21	REV1638R-21	6641-0021	Lock nut M5	1
22	REV1638R-22	6641-0022	Bearing support	1
23	REV1638R-23	6641-0023	Hex nut M6	1
24	REV1638R-24	6641-0024	Bolt M5*20	1
25	REV1638R-25	6641-0025	Hexagon-headed bolt M6*35	1
26	REV1638R-26	6641-0026	Knob part	1
27	REV1638R-27	6641-0027	Rear wheel axel	2
28	REV1638R-28	6641-0028	Rear wheel	2
29	REV3816R-29	6641-0029-1	Fuselage	1
30	REV1638R-30	6641-0030	Screw M5*10	3
31	REV1638R-31	6641-0031	Light spring washer	3
32	REV1638R-32	6641-0032	Big shaft cover	1
33	REV1638R-33	6641-0033	Spring retaining ring	1
34	REV1638R-34	6641-0034	Bearing 6005ZZ	1
35	REV1638R-35	6641-0035	Big shaft support	1
36	REV1638R-36	6641-0036	Big belt wheel	1
37	REV1638R-37	6641-0037	Belt	1
38	REV1638R-38	6641-0038	Screw M4*18	3
39	REV1638R-39	6641-0039	Light spring washer Ø4	3
40	REV1638R-40	6641-0040	Bearing 698ZZ	1
41	REV1638R-41	6641-0041	Gear axel	1
42	REV1638R-42	6641-0042	Big gear	1
43	REV1638R-43	6641-0043	Bearing 6002ZZ	1
44	REV1638R-44	6641-0044	Small belt wheel	1
45	REV1638R-45	6641-0045	Screw ST4*20	7

46	REV1638R-46	6641-0046	Gear housing	1
47	REV1638R-47	6641-0047	Bearing 6201ZZ	1
48	REV1638R-48	6641-0048	Front support of motor	1
49	REV1638R-49	6641-0049	Armature component	1
50	REV1638R-50	6641-0050	Field component	1
51	REV1638R-51	6641-0051	Carbon brush	2
52	REV1638R-52	6641-0052	Brush holder	2
53	REV1638R-53	6641-0053	Bearing 608ZZ	1
54	REV1638R-54	6641-0054	Rear support of motor	1
55	REV1638R-55	6641-0055	Motor screw ST4*75	2
56	REV1638R-56	6641-0056	Fan	1
57	REV1638R-57	6641-0057	Front angle branch	1
58	REV1638R-58	6641-0058	Motor wire	1
59	REV1638R-59	6641-0059	Motor wire	1
60	REV1638R-60	6641-0060	Capacitor	1
61	REV1638R-61	6641-0061	Terminal block	1
62	REV1638R-62	6641-0062	Cord clamp plate	1
63	REV1638R-63	6641-0063	Screw ST4*14	8
64	REV1638R-64	6641-0064	Connecting wire	1
65	REV1638R-65	6641-0065	Wire buckle	3
66	REV1638R-66	6641-0066	Special shape bolt	4
67	REV1638R-67	6641-0067	Knob	4
68	REV1638R-68	6641-0068	Intermedia tube	2
69	REV1638R-69	6641-0069	Collection frame	1
70	REV1638R-70	6641-0070	Collection bag	1
71	REV1638R-71	6641-0071	Right down switch box	1
72	REV1638R-72	6641-0072	Right trigger connection rod	1
73	REV1638R-73	6641-0073	Switch trigger spring	1
74	REV1638R-74	6641-0074	Right up switch box	1
75	REV1638R-75	6641-0075	Screw ST4*25	8
76	REV1638R-76	6641-0076	Rear angle branch	1
77	REV1638R-77	6641-0077	Switch trigger	1
78	REV1638R-78	6641-0078	Left trigger connection rod	1
79	REV1638R-79	6641-0079	Left down switch box	1
80	REV1638R-80	6641-0080	Switch button spring	1
81	REV1638R-81	6641-0081	Switch button	1
82	REV1638R-82	6641-0082	Left up switch box	1
83	REV1638R-83	6641-0083	Switch	1
84	REV1638R-84	6641-0084	Switch box cover	1
85	REV1638R-85	6641-0085	Cord clamp plate	1
86	REV1638R-86	6641-0086	Cord sheath	1
87	REV1638R-87	6641-0087	Supply plug	1
88	REV1638R-88	6641-0088	Data label	1
89	REV1638R-89	6641-0089	Button cover	1
90	REV1638R-90	6641-0090	Heighten button	1

91	REV1638R-91	6641-0091	Reduce spring	1
92	REV1638R-92	6641-0092	Support	1
93	REV1638R-93	6641-0093	Heighten pivot	1
94	REV1638R-94	6641-0094	Backing board	2
95	REV1638R-95	6641-0095	Screw M4*12	2
96	REV1638R-96	6641-0096	Sheeting	2
97	REV1638R-97	6641-0097	Clamp plate	2
98	REV1638R-98	6641-0098	Extension spring	2
99	REV1638R-99	6641-0099	Warning label	1
100	REV1638R-100	6641-0100	Tail-board	1
101	REV1638R-101	6641-0101	Logo	1
102	REV1638R-102	6641-0102	Up cover	1
103	REV1638R-103	6641-0103	Spong cover	1
104	REV1638R-104	6641-0104	Dirt-proof boot	1
105	REV1638R-105	6641-0107	Carbon brush	1
106	REV1638R-106	6641-0106	comb grass wheel complete	1

39-44 !

6641-0105 ! osa převodu komplet